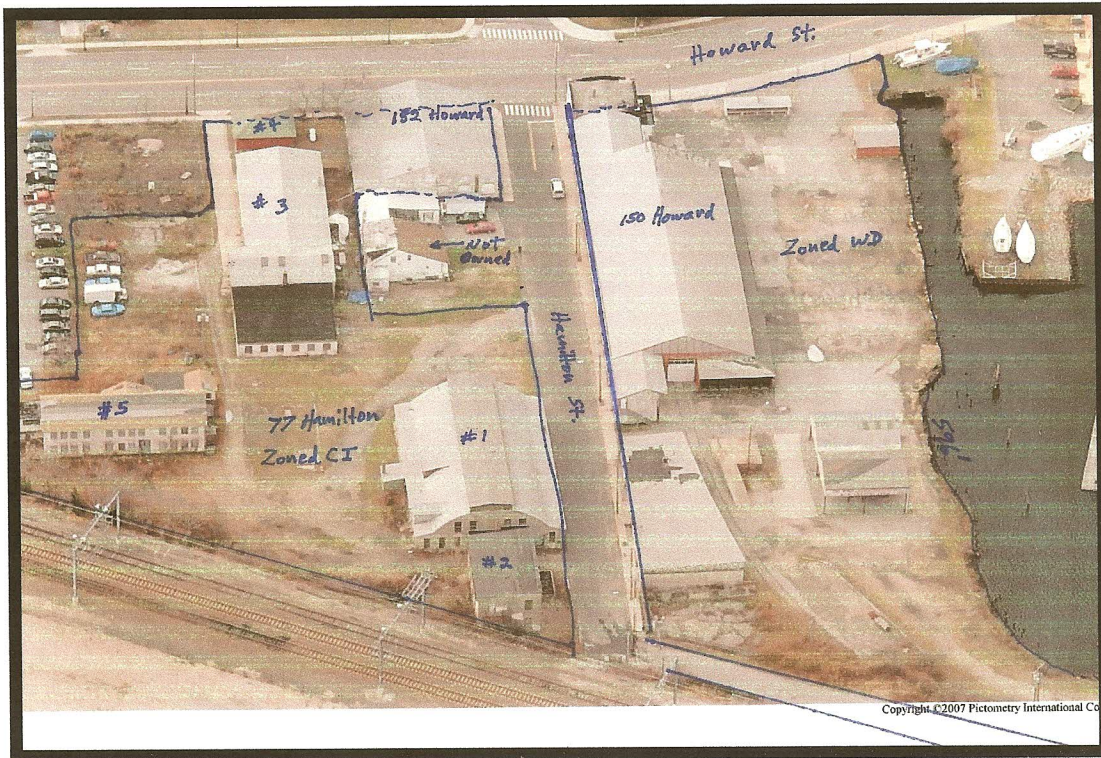


## WATERFRONT DEVELOPMENT SITE

150 Howard St.

New London, CT



*Address:* 150 and 152 Howard St and 77 Hamilton St. New London, CT 06320

*Description:* Two parcels totaling 3.62 acres with 50,000 +/- sf of improvements.

596 ft. water frontage with existing pilings and deep water.

*Location:* 5 Min. to I-95 and 2Hrs to New York and Boston. Minutes to Electric Boat  
Pfizer, Submarine Base, Coast Guard Academy, Connecticut College.

*Zoning:* One parcel is Waterfront Development and one is Commercial I. Numerous possibilities including Waterfront Commerce, Condo up/ Commercial down, shipping via boat/ rail, light manufacturing, retail, etc.

*Amenities:* \*All Public Utilities \*Rail On Site \*City and State Enterprise Zone  
Benefits \*Foreign Trade Zone Benefits \*Level Topo

**Offered at \$1.95 M**

**Bondi COMMERCIAL**

**860 887 3400 25 Witch Meadow Rd., Salem CT 06420 ask for Ken Bondi**